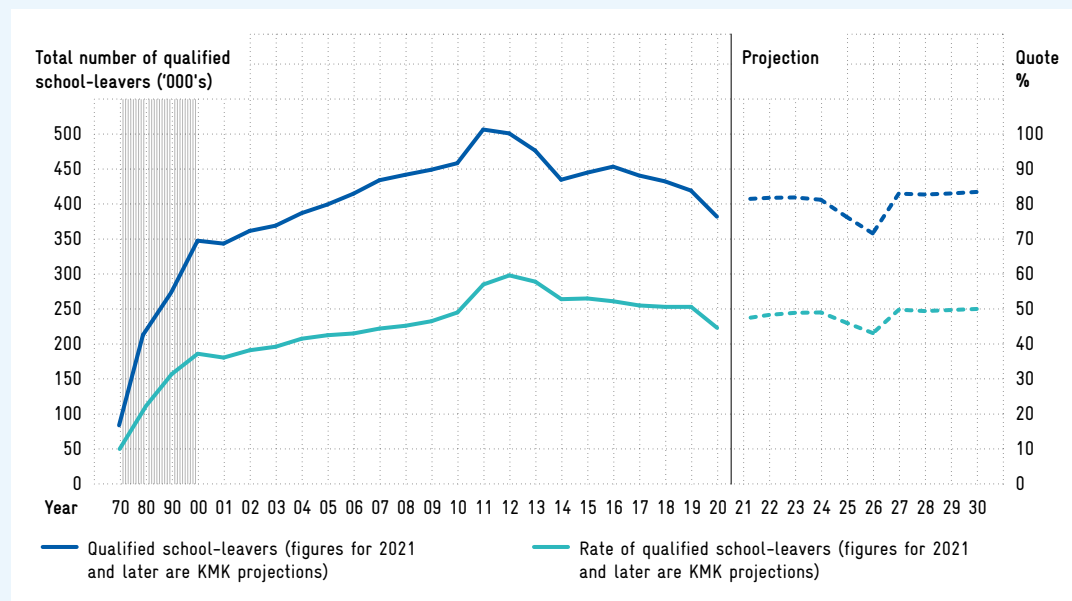


Fig. C 1-3 School-leavers qualified for higher education in Germany 1970–2030



School-leavers qualified for higher education: either with a 'general' or a 'technical' school-leaving certificate* (in Germany: Abitur).
 Rate of qualified school-leavers: number of school-leavers qualified for higher education as a percentage of the relevant age group. Since 2012, rates taking into account the results of the 2011 census.
 Source of actual figures: Federal Statistical Office in Kerst et al. (2022).
 Source of forecast figures: Statistical publications by the Standing Conference of the Ministers of Education and Cultural Affairs (Kultusministerkonferenz, KMK) in Kerst et al. (2022).
 © EFI – Commission of Experts for Research and Innovation 2022.